

Beautiful Private Paradise



Private Paradise or Development Potential
82.78 Acres with Great Frontage on Lake Weiss
Booming Resort Area With Prices Going Nowhere But Up
Even Own A Part of an Island With This Property

H & H REALTY, LLC

Your Success is our Business

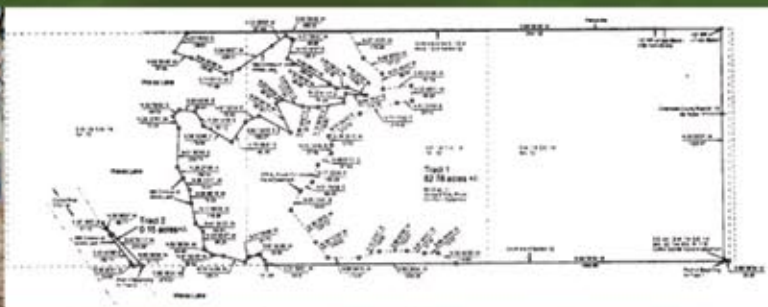


Commercial, Industrial, Investments, Land.

Mark A. Harris
Broker
Cell Phone:
770-314-3145

Charley Harper
Sales Associate
Cell Phone:
678-986-1143

770-386-1400



At Lake Weiss

*Private Paradise
Or Development Potential*

Information Believed To Be True By H&H Realty, LLC But Is Not Warranted.

H & H REALTY, LLC

Your Success is our Business

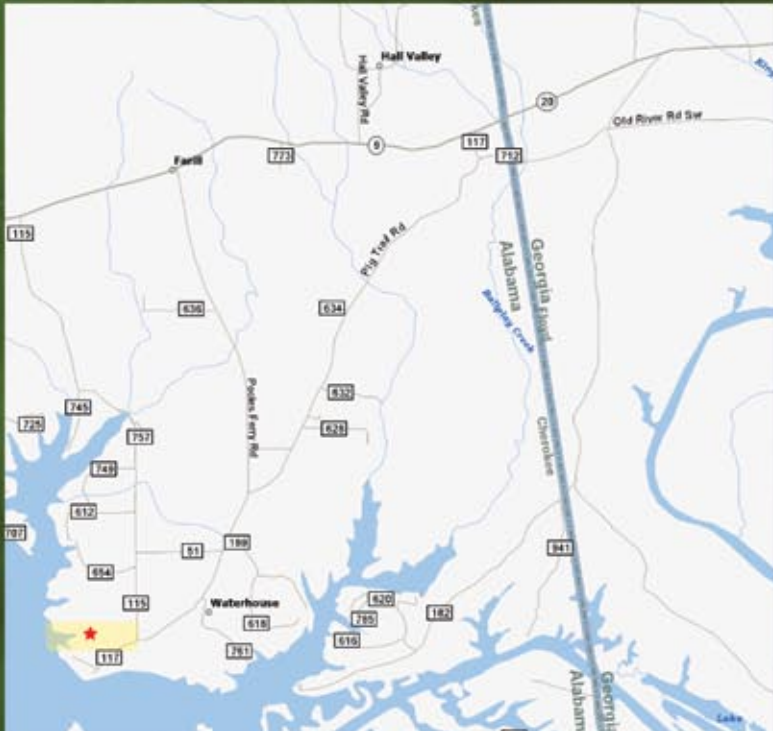


659 Henderson Drive, Suite F
Cartersville, Georgia 30120

Paradise at Lake Weiss for:



Private Paradise or Development Potential



Life On Beautiful Lake Weiss



Directions From Rome, Georgia
Begin on HWY 27 West to HWY 20
Proceed WEST on HWY 20
Take LEFT at Intersection with Poolers Ferry Rd
Continue SOUTH on Poolers Ferry Rd
Take Right at Intersection With Road #115
Property is Located to the Left.

Directions From Atlanta, Georgia
Take I-75 NORTH to Exit 288 (Cartersville Main St.)
Turn LEFT on to Main Street (HWY 311)
Turn RIGHT on to HWY 411
Proceed NORTH to Rome on HWY 411
Turn RIGHT on to HWY 27 (Rome)
Continue from Rome, Georgia Directions Above

Won't Last Long - Look Inside For Details